

Corporate Data

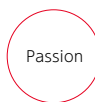
Corporate Philosophy

KIRIN brings joy to society by crafting food and healthcare products inspired by the blessings of nature and the insights of our customers.

2027 Vision

A global leader in CSV, creating value across our world of Food & Beverages to Pharmaceuticals.

“One KIRIN”Values



Our determination to continuously provide our customers and society with new value propositions based on innovative ideas, and our enthusiasm to meet goals with pride in the companies we work for and the brands we offer.



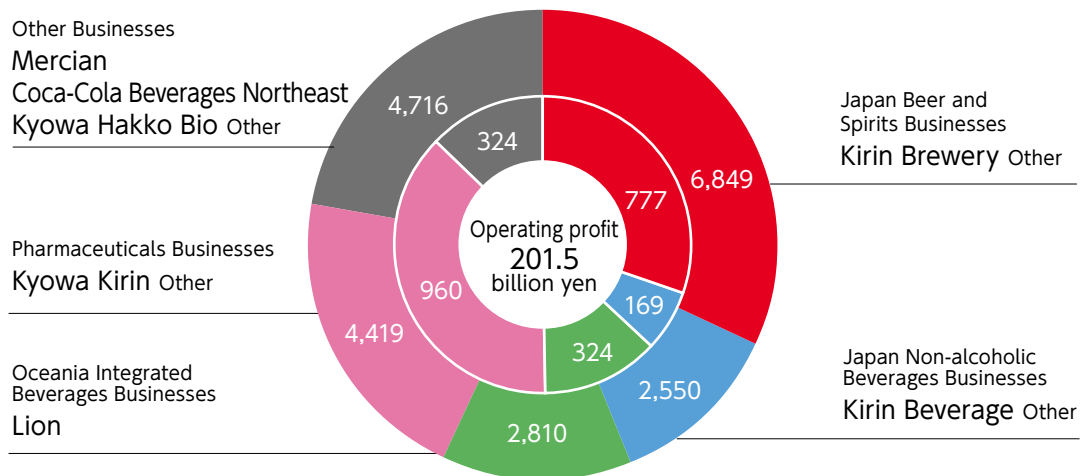
Our gratitude to our stakeholders for always helping us move forward, and our promise to remain honest and humble in every business activity to serve them better.



Our respect for different perspectives and values that enable constructive discussions, and our belief that the “differences” have the power to change the world and create better solutions.

*Inside: Normalized Operating Profit, Outside: Revenue (Actual results for the year ended December 31, 2023)

Sales revenue **2,134.4** billion yen

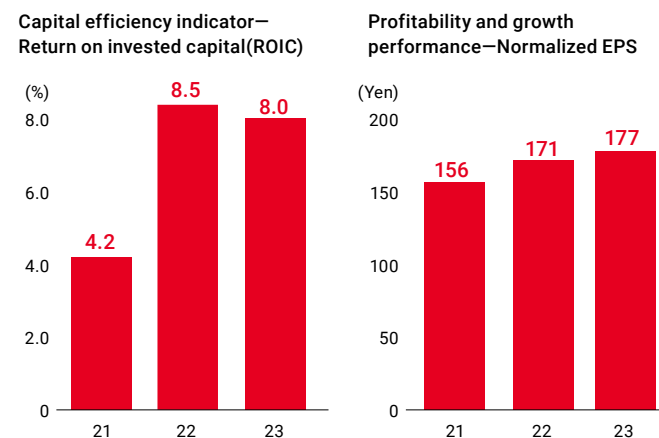


| Segment | Food & Beverages | Pharmaceuticals | Health science | Company |
|--|------------------|-----------------|----------------|---|
| Japan Beer and Spirits Businesses | ● | | | Kirin Brewery |
| Japan Non-alcoholic Beverages Businesses | ● | | | Kirin Beverage |
| Oceania Integrated Beverages Businesses | ● | | | Lion |
| Pharmaceuticals Businesses | | ● | | Kyowa Kirin |
| Other Businesses | ● | | ● | Mercian Coca-Cola Beverages Northeast Kyowa Hakko Bio Other |

Company Overview

| | |
|------------------------------|---|
| Trade Name | Kirin Holdings Company, Limited |
| Date of Incorporation | February 23, 1907 <small>*Kirin Brewery Co., Ltd. changes its name to Kirin Holdings Co., Ltd. and becomes a holding company of the Kirin Group on July 1, 2007.</small> |
| Head Office | NAKANO CENTRAL PARK SOUTH 10-2, Nakano 4-chome, Nakano-ku, Tokyo 164-0001, Japan |
| Paid-in Capital | 102,045,793,357 yen |
| Number of Employees | 30,183 employees on a consolidated basis (as of December 31, 2023) |

Financial Key Performance Indicators

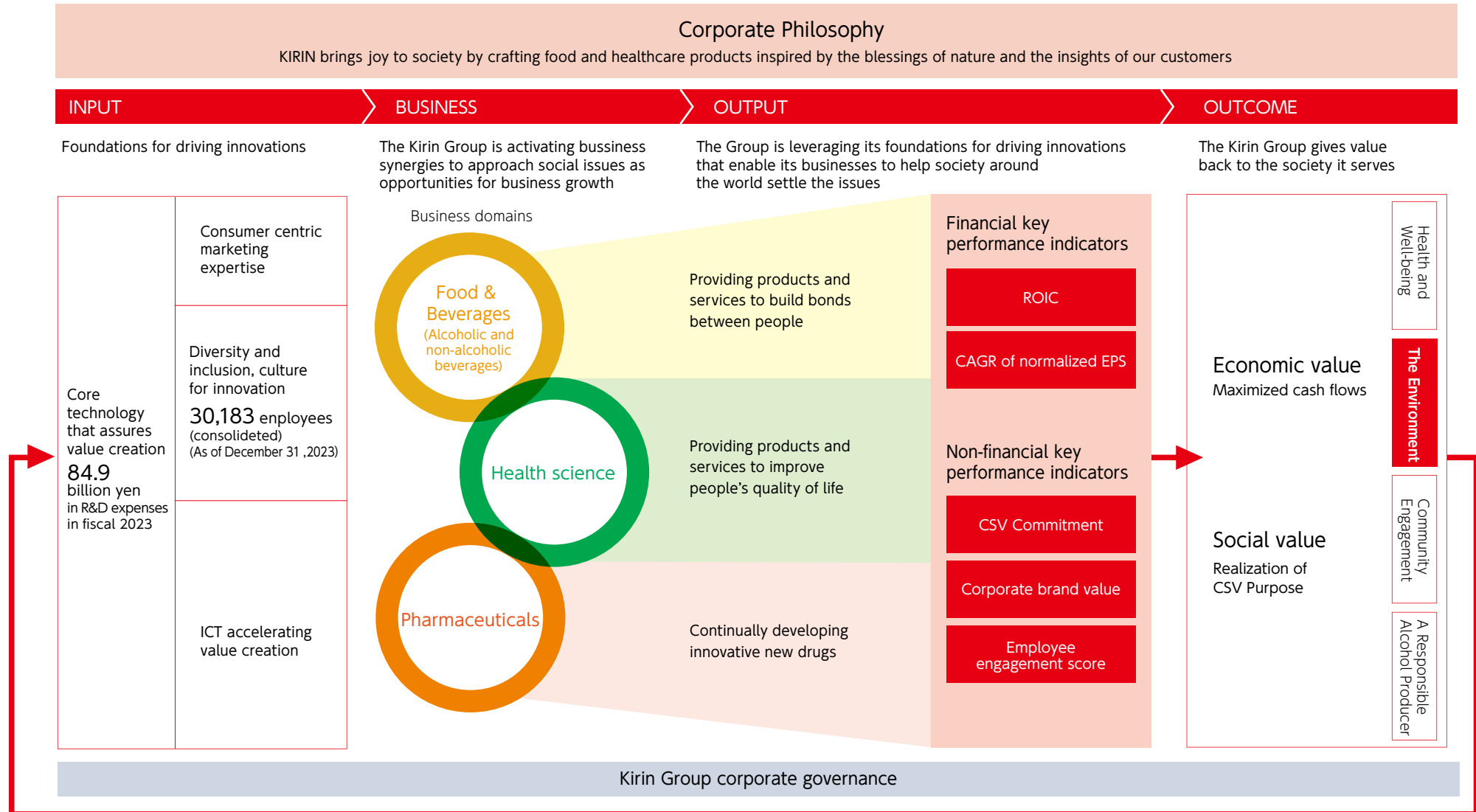


Value Creation Model

The Kirin Group places CSV (Shared Value Creation) at the core of its management. We will work to solve social issues through our business activities and achieve sustainable growth together with society by simultaneously creating social and economic value. The "value creation model" illustrates a sustainable mechanism for amplifying the two types of value creation by reinvesting the

economic value gained in our organization's capabilities. Business development through the three domains of food, medicine, and health science requires the use of natural capital and the resolution of environmental challenges such as container packaging and climate change. Through the resolution of these issues and the sustainable use of natural capital, our business

creates value that gives back to society. In the value creation model, the non-financial goal of the "environment" is shown as an important factor. Under "Kirin's Environmental Value Correlation," we explain how environmental issues relate to the Kirin Group's value creation model.



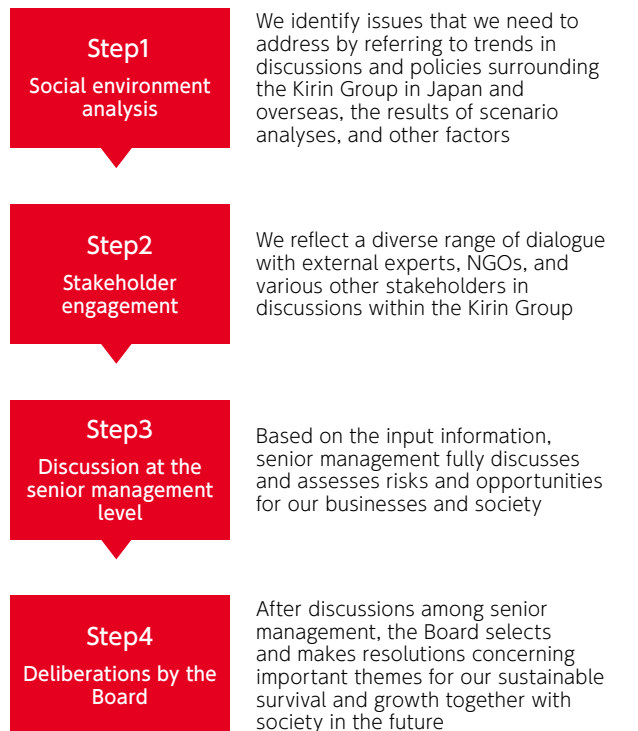
Identification of Materiality

The Kirin Group assessed the importance of sustainability issues in order to formulate the Kirin Group 2022-2024 Medium-term Business Plan, which marks the second stage toward realizing the Long-Term Management Vision, the Kirin Group Vision 2027, announced in 2022. Following the flow for identifying materiality, we updated our social environment analysis and, through dialogue with internal and external stakeholders, discussion at the senior management level, and deliberations by the Board, we updated our "Management Issues for Sustainable Growth (Group Materiality Matrix)" with a 10-year outlook. In addition, there is a separate explanation of materiality in the general requirements of the TCFD (Task Force on Climate-related Financial Disclosures)/TNFD (Task

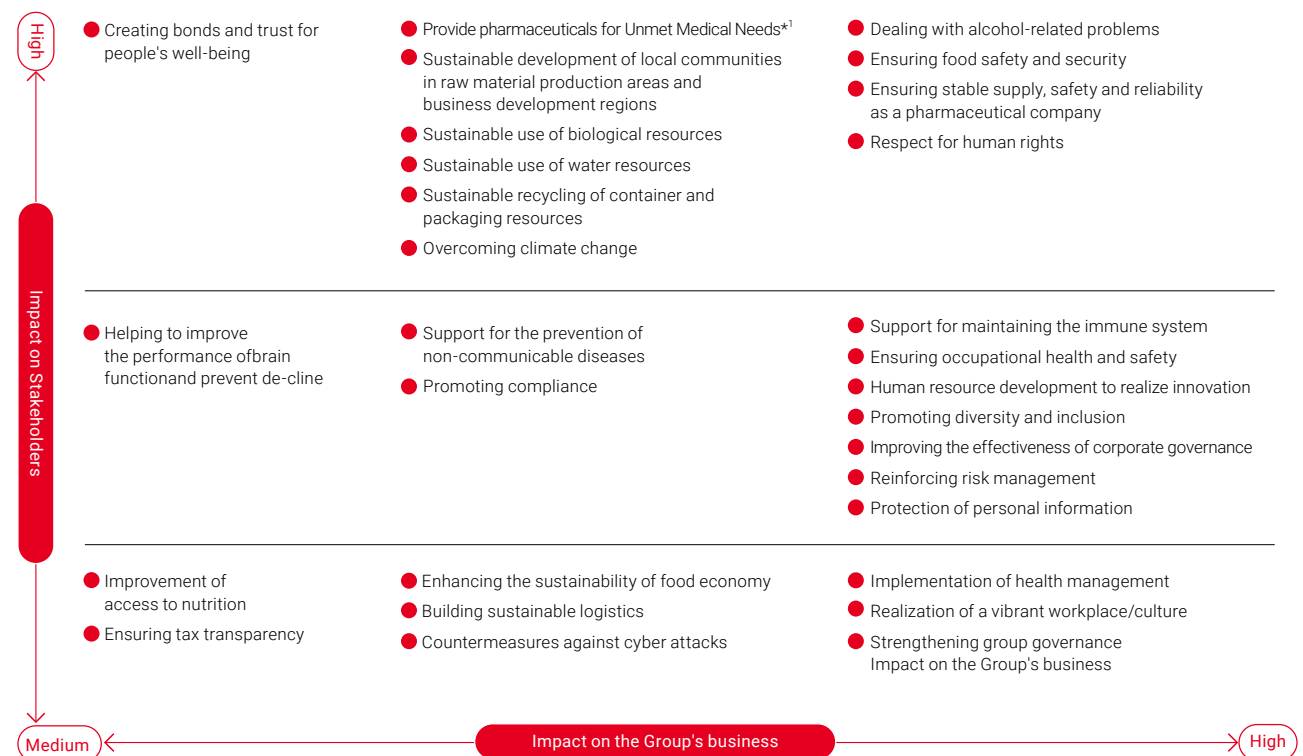
Force on Nature-related Financial Disclosures). In this process, we identify the issues that are most important to the Kirin Group and its stakeholders and consider where the Kirin Group can have positive impacts. As a result, we reconfirmed that the following four important themes related to the environment that we set in the Kirin Group's Environmental Vision 2050 are highly material for Kirin Group management: "Sustainable use of biological resources," "Sustainable use of water resources," "Sustainable recycling of containers and packaging," and "Overcoming climate change." The TNFD Guidance (Recommendations of the Task Force on Nature-related Financial Disclosures) v1.0, published in September

2023, recommends an integrated approach to climate and nature-related issues. In the 2013 Kirin Group Long-Term Environmental Vision, the Kirin Group adopted a holistic approach to address the four environmental issues of biological resources, water resources, containers and packaging, and climate change as "interrelated environmental issues" rather than independent ones. This is a philosophy and concept that the Kirin Group has consistently pursued ever since it shifted its focus to environmental activities with a global perspective. As a leading company that has adopted the integrated approach, the Kirin Group aims to contribute to the dissemination of this philosophy and the resolution of environmental issues.

Flow for the identification of materiality



Management Issues for Sustainable Growth (Group Materiality Matrix) (Updated in 2022)



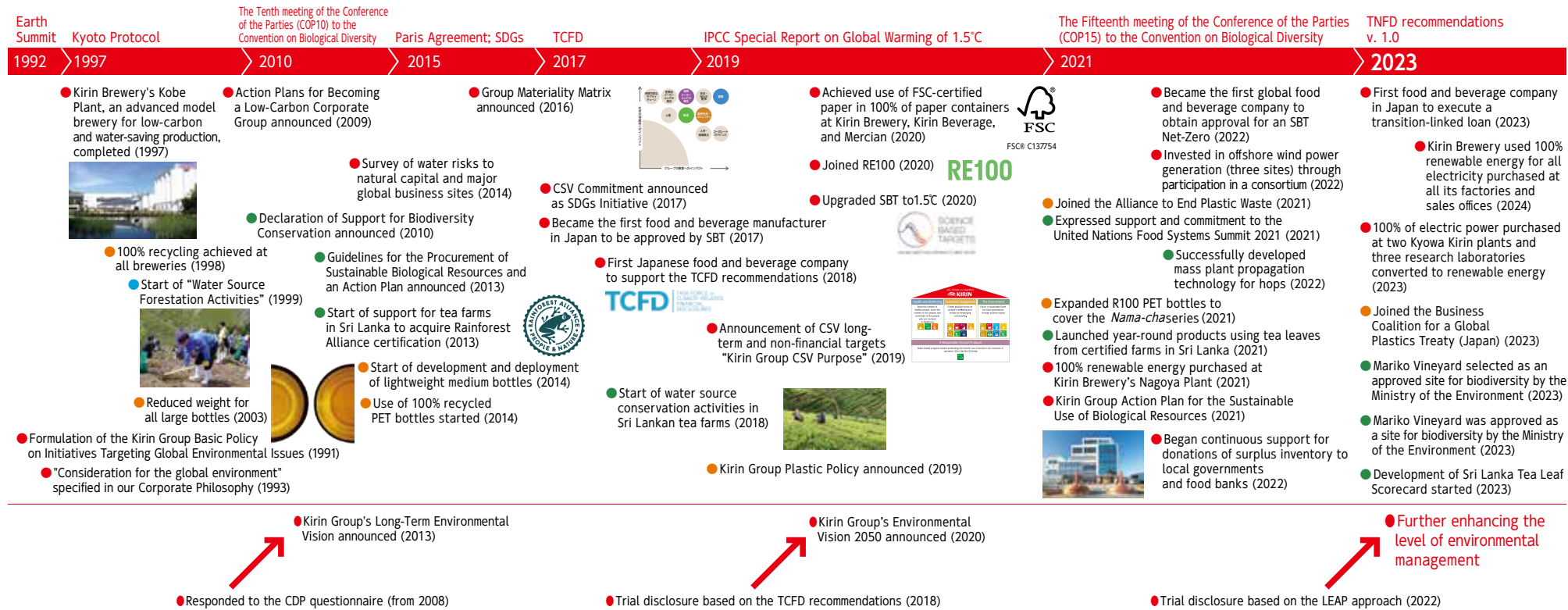
*1 Provision of pharmaceuticals for diseases for which there are no effective treatments, including rare diseases

Global Trends and Kirin's Actions

The Kirin Group has stayed ahead of global trends and has raised the level of its environmental management by repeatedly implementing trial initiatives. In anticipation of the 1992 Earth Summit in Rio de Janeiro, the Kirin Group established its Basic Policy for Addressing Global Environmental Issues in 1991. The following year, in 1993, we revised our management philosophy to state that "we aim to be a corporate group that considers the global environment," and shifted our environmental management focus from pollution control to activities that take the entire planet into consideration. Since then, we have undertaken a number of industry-first initiatives, including making a corporate presentation at the Third Conference of the Parties to the United Nations Framework Convention on Climate Change held in Kyoto in 1997, starting our Water Source Forest Conservation Activities in 1999, making our returnable beer bottles the lightest in Japan in 2003, and making 100% of our paper containers FSC®-certified paper in 2020.

The Kirin Group has adopted an advanced disclosure framework to further raise the level of environmental management. Around 2008, we started responding to questionnaires from CDP (a non-governmental organization). At the time, ESG was not yet considered an important issue, but responding to CDP's questionnaire was seen as an effective way to deepen understanding of global environmental issues. Appropriate responses to CDP led to the Kirin Group having a multi-layered understanding of environmental issues and to the Kirin Group's Long-Term Environmental Vision, which was announced in 2013. Furthermore, in order to respond to the TCFD guidance published in 2017, the Kirin Group began conducting scenario analysis early on. As a result, the need to approach the environmental themes of "biological resources," "water resources," "containers and packaging," and "climate change" as interrelated issues in an integrated manner rather than as separate issues has spread to everyone from

management to employees. This common understanding became the foundation for the improvement of environmental management. Another common understanding within the company that complying with advanced disclosure frameworks had contributed to improving environmental management, and led us to become the first in the world to attempt trial disclosure based on the beta version v0.1 of the TNFD (Task Force on Nature-related Financial Disclosures) framework. Although trial disclosure involves risks, we believe that it enable us to obtain a great deal of feedback, deepen our understanding of environmental issues, clarify our vision, and advance our environmental management. The Kirin Group will lead the way in building a decarbonized society, Nature Positive, and a recycling-oriented society by continuing its pioneering efforts to address global environmental challenges.



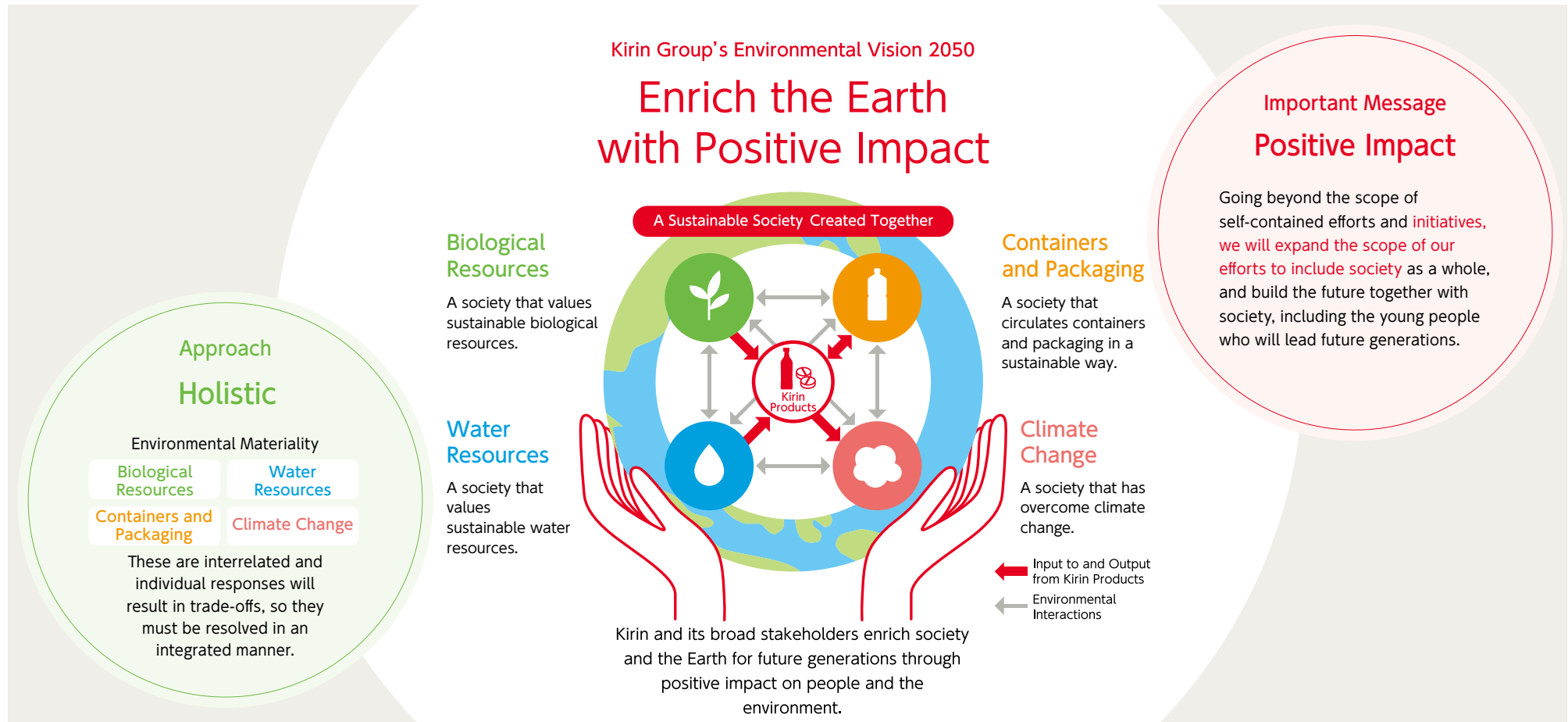
Kirin Group's Environmental Vision 2050

Enrich the Earth with Positive Impact

Society has reached a major turning point against the backdrop of growing global environmental problems, including the climate crisis, the ongoing loss of biodiversity, and plastic pollution of the oceans. Industries such as the Kirin Group, which rely on natural bounty such as water and agricultural products, are susceptible to environmental problems and there is need to address such issues urgently. Through scenario analysis based on the TCFD recommendations, which has been conducted since 2017, the Kirin Group has grasped

the seriousness of the impact that climate change have on agricultural products and water resources. We have learned that in order to pass on a sustainable Earth to future generations, it is not enough to simply minimize negative impacts and achieve neutrality. Furthermore, corporate environmental policies are expected to evolve from being self-contained within a company to having a positive impact on society as a whole. In order to respond to such societal demands, the Kirin Group

has further developed the idea of an "integrated" approach that holistically addresses complex and interrelated environmental issues (biological resources, water resources, containers and packaging, and climate change) into our revised "Kirin Group's Environmental Vision 2050" and "Positive Impact" approach, which were discussed and resolved by the Board in 2020. Under this new Vision, together with the young people who will lead the future, we will create a prosperous world for the next generation.



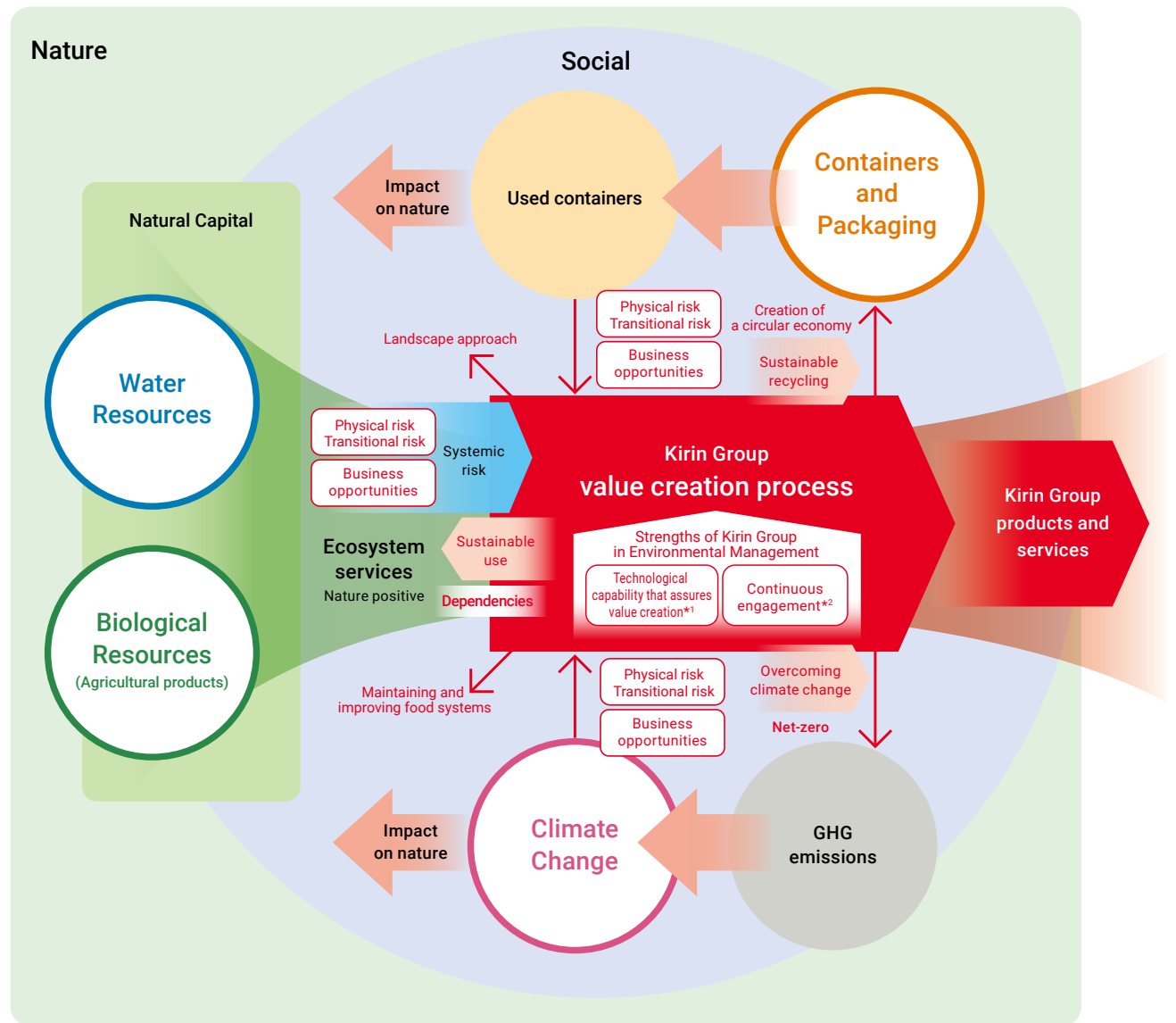
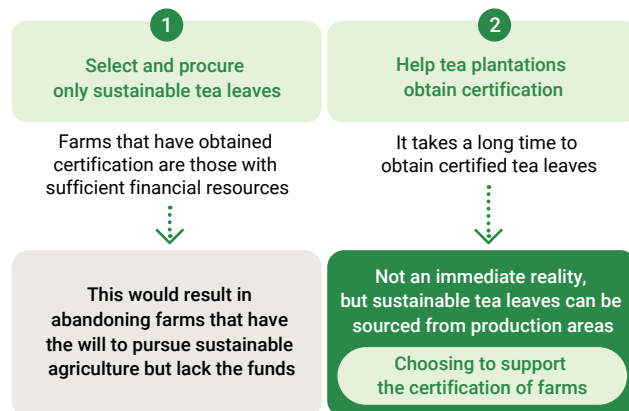
Expanding the Scope of Positive Impact

We have made some revisions to the "Environmental Value Correlation Chart," which shows the Kirin Group's integrated approach, to clarify that we will expand the scope of our positive impacts, which is a key message of our Environmental Vision.

What we added was the "Landscape Approach" and the concept of "food systems."

In Sri Lanka, we decided that the procurement of certified tea leaves alone would not ensure the sustainability of our production areas, so we chose to support tea plantations in obtaining certification. The Kunming-Montreal Global Biodiversity Framework (GBF) refers to the "Landscape Approach" as a method that comprehensively addresses the diverse human activities and natural environments of raw material production areas and leads to sustainable solutions to problems. The Sri Lankan case is also a solution to the problem through the concept of a "food system," which considers food not as an individual issue such as agriculture, but as a single system involving food production, processing, distribution, consumption, and waste. A one-dimensional view that looks only upstream and downstream, with the company at the center, could fail to realize that there are negative trade-offs for others outside the value chain, even if there seems to be a positive impact on the company. Although the landscape approach and the approach treating food as a systems take time and effort, they have a positive impact on raw material producing areas and contribute to stable procurement of raw materials and brand improvement. So, we have decided to clearly recognize and work on them as part of the Kirin Group's integrated approach.

Kirin's Initiative in Sri Lankan Tea Farms







*1 Engineering and R&D capabilities (Kirin Central Research Institute, Institute of Health Sciences, Institute for Packaging Innovation)

*2 Engagements: Contributions to rulemaking and policy recommendations (TCFD, SBTN, TNFD pilot test participation), various organizations (NGO: Rainforest Alliance), FSC Japan, WWF Japan, Earthwatch Japan, etc. Consortiums: Consortium for Sustainable Paper Use, Rainforest Alliance Consortium, etc. Communities: Sri Lanka Tea Plantation, areas around Mercian's own managed fields, etc. Next generation: Kirin School Challenge, Japan Environmental Youth Network, etc.

Progress (2023)

Part of the "Initiatives to Achieve" of the Environmental Vision is reflected in the "CSV Commitment", a medium- to long-term action plan that each business is working on to achieve the "CSV Purpose".

The status of their implementation is monitored on a quarterly basis and reported to the Kirin Holdings Board of Directors. Current progress, including qualitative elements, is as follows.

| Theme | Initiatives to Achieve | Major Item | Minor Item | Targets | 2021 | 2022 | 2023 | |
|--|---|---|---|---|---|--|--------------------------|----------|
|  Biological Resources A society that values sustainable biological resources | Cultivate, expand and procure sustainable agricultural raw materials | Raw materials | Use of FSC-certified paper or recycled paper for office paper KB KBC ME | 100% (2020) | 100% | 100% | 100% | |
| | | | Response to sustainable palm oil *Except palm kernel oil KB KBC ME KIW | 100% (2020) | 100% | 100% | 100% | |
| | Stand by the side of farmers to make raw material production areas sustainable | Supporting Sri Lankan tea farms to obtain Rainforest Alliance certification | Commodities and By-Products | Reduction of food waste (Compared with 2015 levels) KB KBC ME | -75% (2025) | -81% | -92% | -90% |
| | | | Number of large farms assisted to obtain Rainforest Alliance certification (Number of farms trained) KBC | Total: 15 farms (2022 to 2024) | – | Total 4 farms | Total 4 farms | |
| | | | | <small>Total number of certified large farms: 94 (2013 to 2022)</small> | | | | |
| Number of small farms assisted to obtain Rainforest Alliance certification (Number of farms trained) KBC | Total: 5,350 farms (2022 to 2025) | – | Total 9 farms | Total 629 farms | | | | |
| | <small>Cumulative total of 120 small farms(2018 to 2022)</small> | | | | | | | |
|  Water Resources A society that values sustainable water resources | Bring water, used as a raw material, to a sustainable state | Water source conservation activities at Sri Lankan tea farms | Number of water source conservation sites KBC | 5 sites (2020) | 12 sites | 15 sites | 24 sites | |
| | | | Solve water issues according to the watershed characteristics of business locations | Water reduction | Reduction of water consumption rate LN | 2.4kl/kl (2025) | 3.5kl/kl | 3.6kl/kl |
| | Rate of reduction of water use volumes (Compared with 2019 levels) KKC | -40% (2030) | | | -25% | -33% | -36% | |
| | Rate of reduction of water use volumes (Compared with 2015 levels) KHB | -32% (2030) | -52% | -52% | -61% | | | |
|  Containers and Packaging A society that circulates containers and packaging in a sustainable way | Develop and disseminate sustainable containers and packaging | PET bottles | Ratio of usage of recycled resin for PET bottles KB KBC ME | 50% (2027) | 4.9% | 8.3% | 28.0% | |
| | | Paper container | Use of FSC-certified paper for 6-can packs KH KB KBC ME | 100% (2020) | 100% | 100% | 100% | |
| | | | Use of FSC-certified paper for gift boxes KH KB KBC ME | 100% (2020) | 100% | 100% | 100% | |
| | | | Use of FSC-certified paper for drink boxes KH KB KBC ME | 100% (2020) | 100% | 100% | 100% | |
| | | | Use of FSC-certified paper for cardboard cartons for products KH KB KBC ME | 100% (2020) | 100% | 100% | 100% | |
| | Build a resource-recycling system to make containers and packaging sustainable | Building a social system | AEPW (Alliance to End Plastic Waste) Japan Business Coalition for a Global plastics Treaty | | | 2021: First Japanese food company to join Participation since inception in November 2023 | | |
|  Climate Change A society that has overcome climate change | Realize Net-Zero GHG emissions from the entire value chain | Reduction in GHGs | GHG emissions from the entire value chain KG | Net-Zero (2050) | 4,010ktCO ₂ e | 4,110ktCO ₂ e | 3,942ktCO ₂ e | |
| | | | GHG emission reduction rate – Scope 1 + Scope 2 (Compared with 2019 levels) KG | -50% (2030) | -14% | -18% | -31% | |
| | | | GHG emission reduction rate – Scope 3 (Compared with 2019 levels) KG | -30% (2030) | -12% | -8% | -10% | |
| | | | Renewable energy | Ratio of renewable energy in plant purchased electric power KG | 100% (2040) | 17% | 27% | 42% |
| | Lead to build a decarbonized society | Reduction of GHGs from agriculture | Measurement of GHG emissions from agricultural land, GHG fixation by biochar from pruning waste | | | 2024: Joint research begins at Château Mercian Mariko Vineyard | | |